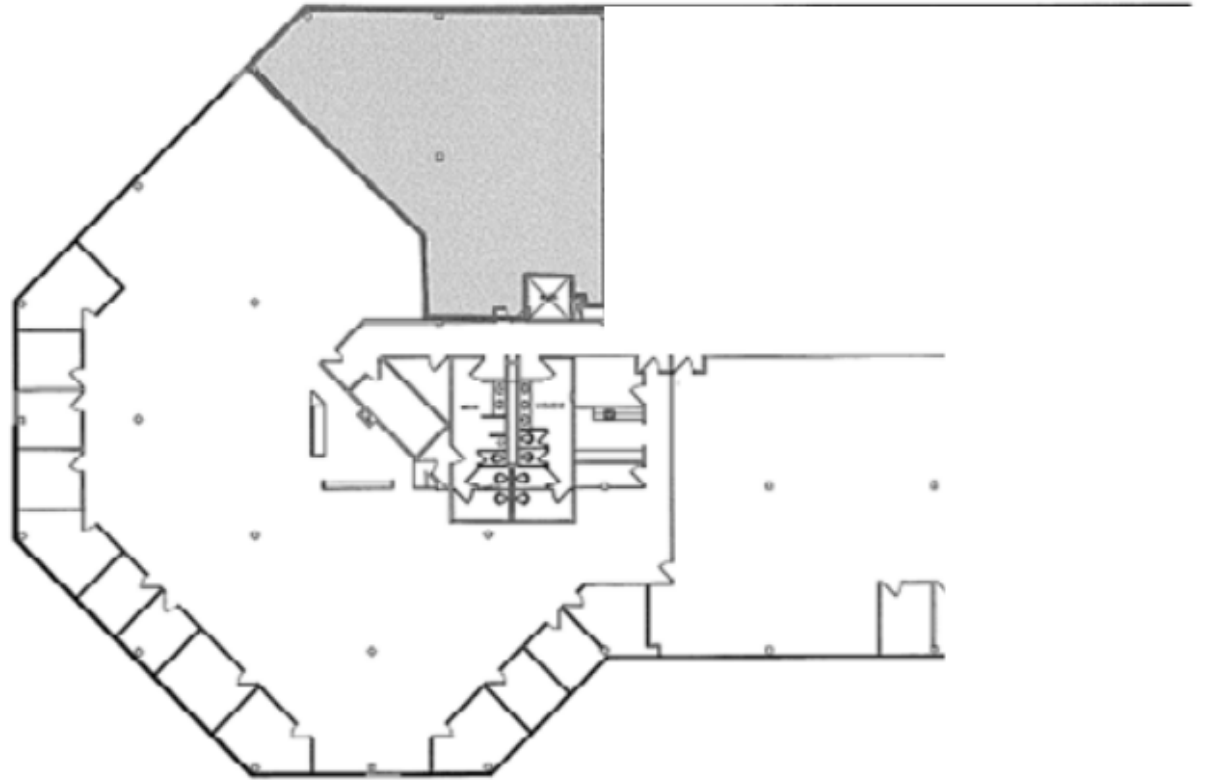


Suite	301
Floor	Third
Size	2,642 RSF



# 200 NORTH WARNER ROAD

200 N Warner Road, King of Prussia, PA 19067  
200NorthWarnerRoad.com

FOR LEASING INFORMATION

**Whitney Hunter**  
+1 610 249 2261  
whitney.hunter@jll.com

**Mike MacCroy**  
+1 610 249 2270  
mike.maccroy@jll.com

**Jones Lang LaSalle Brokerage, Inc.**  
550 E. Swedesford Road, Suite #260  
Wayne, PA 19087  
jll.com/philadelphia



Although information has been obtained from sources deemed reliable, neither Owner nor JLL makes any guarantees, warranties or representations, express or implied, as to the completeness or accuracy as to the information contained herein. Any projections, opinions, assumptions or estimates used are for example only. There may be differences between projected and actual results, and those differences may be material. The Property may be withdrawn without notice. Neither Owner nor JLL accepts any liability for any loss or damage suffered by any party resulting from reliance on this information. If the recipient of this information has signed a confidentiality agreement regarding this matter, this information is subject to the terms of that agreement. ©2025. Jones Lang LaSalle Brokerage, Inc. All rights reserved.