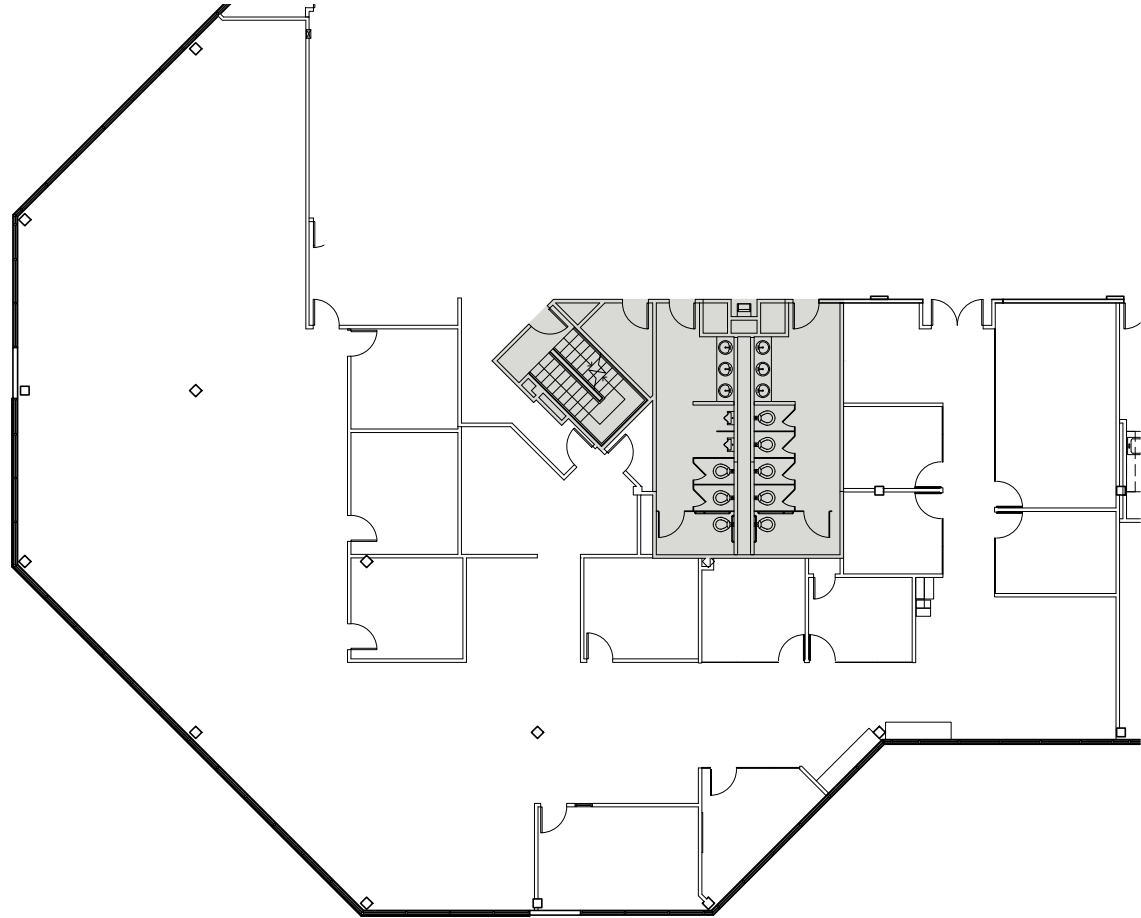
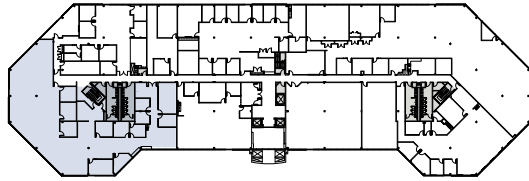


Suite	203
Floor	Second
Size	8,617 RSF



200 NORTH WARNER ROAD

200 N Warner Road, King of Prussia, PA 19406
200NorthWarnerRoad.com

FOR LEASING INFORMATION

Whitney Hunter
+1 610 249 2261
whitney.hunter@jll.com

Mike MacCroy
+1 610 249 2270
mike.maccroy@jll.com

Jones Lang LaSalle Brokerage, Inc.
550 E. Swedesford Road, Suite #260
Wayne, PA 19087
jll.com/philadelphia



Although information has been obtained from sources deemed reliable, neither Owner nor JLL makes any guarantees, warranties or representations, express or implied, as to the completeness or accuracy as to the information contained herein. Any projections, opinions, assumptions or estimates used are for example only. There maybe differences between projected and actual results, and those differences may be material. The Property may be withdrawn without notice. Neither Owner nor JLL accepts any liability for any loss or damage suffered by any party resulting from reliance on this information. If the recipient of this information has signed a confidentiality agreement regarding this matter, this information is subject to the terms of that agreement. ©2025. Jones Lang LaSalle Brokerage, Inc. All rights reserved.